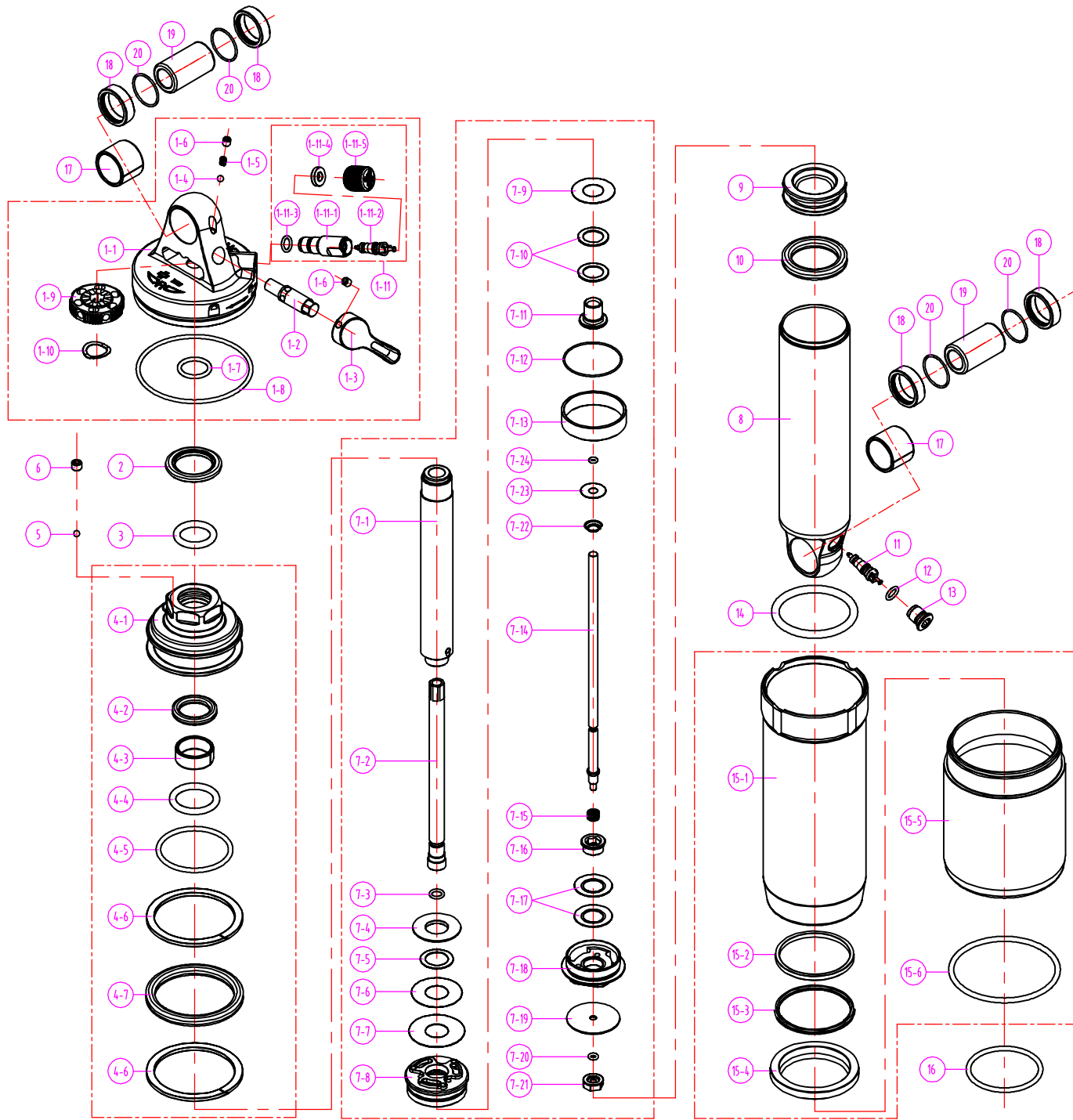


SR SUNTOUR

RS17-DUAIR LO-R / LO-R8

190-51

Date	2018.09.4	Version	1
Amended			



20	O RING	RAA081	4	4	4	4	4	4	4	4
		REED89	1	1	1	1	1	1	1	1
		REED89	1	1	1	1	1	1	1	1
19	AL BUSHING	REED88	1	1	1	1	1	1	1	1
		REED88	1	1	1	1	1	1	1	1
		RAA080	2	2	2	2	2	2	2	2
18	AL BUSHING	RAA080	2	2	2	2	2	2	2	2
17	DU	REE074	2	2	2	2	2	2	2	2
16	O RING	RAA100	1	1	1	1	1	1	1	1
		RBA216-30XL								1
		RBA216-30L							1	
		RBA216-30M			1	1				
		RBA216-30S	1	1						
15	GAS CYLINDER ASSEMBLY									
14	O RING	FAA352	1	1	1	1	1	1	1	1
13	AIR CAP	RAA102	1	1	1	1	1	1	1	1
12	O RING	FAA140	1	1	1	1	1	1	1	1
11	AIR VALVE	FAA170	1	1	1	1	1	1	1	1
10	X RING	RAA046	1	1	1	1	1	1	1	1
9	FLOATING PISTON	REE066	1	1	1	1	1	1	1	1
8	MAIN BODY	RLB101-4	1	1	1	1	1	1	1	1
		RBA203-30-R8		1		1		1		1
		RBA203-30	1		1		1		1	
7	MAIN SPINDLE ASSEMBLY									
6	SCREW	PSB103	1	1	1	1	1	1	1	1
5	STEEL BALL	DS0001	1	1	1	1	1	1	1	1
4	SUPPORT SET ASSEMBLY	RBA201	1	1	1	1	1	1	1	1
3	O RING	RAA052	1	1	1	1	1	1	1	1
2	WASHER	RSW073	1	1	1	1	1	1	1	1
1	TOP ASSEMBLY	RBA200	1	1	1	1	1	1	1	1
NO.	DESCRIPTION	SR CODE	LO-R S	LO-R8 S	LO-R M	LO-R8 M	LO-R L	LO-R8 L	LO-R XL	LO-R8 XL